



# City of Slidell

Department of Cultural & Public Affairs

Alex Carollo • acarollo@cityofslidell.org • www.slidell.la.us  
P.O. Box 828, Slidell, LA 70459 • 985.646.4375 • Fax 985.646.4231

August 18, 2010

## PRESS RELEASE

For Immediate Release

Press Contact: Alex Carollo, 985-646-4375

## St. Tammany artists shine in *Where Are They Now?* exhibit



Marty Sixkiller

Animators, artists, photographers, singers, dancers, musicians, authors, sculptors, graphic artists, culinary artists, furniture makers and even a magician will all be a part of the City of Slidell's *Where Are They Now?* 2010 exhibition. This unique exhibit will showcase St. Tammany alum who enjoy careers in the arts and current students who are pursuing artistic endeavors.

*Where Are They Now?* opens on Friday, August 27 with an opening reception from 7 to 9 p.m. at the Slidell Cultural Center at City Hall. Admission is free.

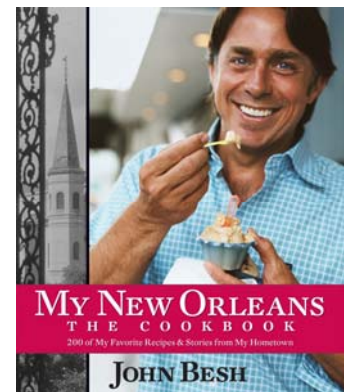
"This is a sequel to our first *Where Are They Now?* event, hosted in 2007," said Kim Bergeron, director of the City of Slidell's Department of Cultural & Public Affairs. "We want to illustrate to today's generation of students the

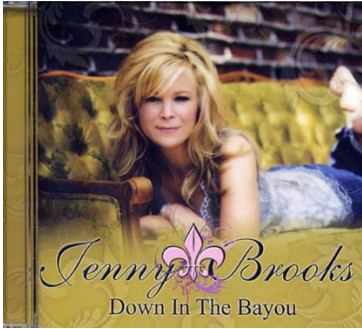
many possibilities that the arts can provide, and we feel that by showcasing some of St. Tammany's finest success stories, we can achieve that goal."

So, *Where Are They Now?*

Marty Sixkiller is an animator for PDI/DreamWorks Animation. He recently served as the Editorial/Post Supervisor for *How to Train Your Dragon*, *Shrek Forever After* and *Kung Fu Panda*.

John Besh is the executive chef and co-owner of the Besh Restaurant Group, which includes August, La Provence, Lüke, Besh Steak, Domenica and The American Sector. Besh is the host of two national TV shows on TLC and PBS and was the runner-up on the Food Network's hit series, *Next Iron Chef*. His first solo-authored cookbook, *My New Orleans*, was released in fall 2009.





Jenny Brooks is a rising country music star who recently opened for Kenny Chesney, Brooks and Dunn and Jason Aldean at the Bayou Country Superfest. Brooks' new single, *Down in the Bayou*, can be found on her debut CD, appropriately titled *Down in the Bayou*.

Felicia Finley is an actress and singer who has performed in numerous Broadway plays such as *The Wedding Singer* and *Aida*. In 2009, she toured the U.S. with *Happy Days - A New Musical* (developed by Gary Marshall) and released her debut solo album, *Great Mood for a Tuesday*.

Darren Bagert is a Tony Award, Drama Desk, and Outer Critics Circle Award winning producer who is currently part of the Broadway team of *ENRON*, the award-winning show now playing on London's West End. Darren was nominated for his sixth Tony Award for *Guys and Dolls*, starring Oliver Platt and Lauren Graham.

Adam Sambola is an artist and the creator of RedBean the Crawfish. His award-winning "Cajun Series" and RedBean paintings have attracted collectors from throughout the world. He is the owner of Sambola Gallery in Slidell.

Charlotte Lowry Collins is an artist whose works have been displayed in galleries throughout the southeastern U.S. She serves as the Director of the Olde Towne Arts Center and is putting the finishing touches on her book *Rooted in Liberté*, an "artist book" about the history, homes and people of Bayou Liberty.



Amy Guidry is a professional artist who has displayed her works in galleries and museums throughout the U.S. Her work recently gained national exposure on the popular MTV show *Real World New Orleans*. Guidry's works were featured in the *Real World* house.

BriAnna Dewar is a classically trained singer who attends the Eastman School of Music in New York. BriAnna placed first in the Barry Alexander International Vocal Competition where she won the



chance to perform at the prestigious Carnegie Hall, was the winner of *Slidell's Got Talent* and was recently named the Fox 8 New Orleans' Idol 2010 winner.

John Doherty is the owner of John Doherty Design and Iron in Colorado. He designs jewelry and sculptures, including a new Hurricane Katrina memorial in Heritage Park, to be dedicated in conjunction with the fifth anniversary of Katrina.

Blake Kenworthey is a college student at Nichols State University. He is pursuing degrees in fine arts and art education. Kenworthey's works have won him numerous ribbons in the City of Slidell's *Salad Days* student art exhibitions.

Trigg Burrage is a professional magician who has performed across the U.S. He placed first in both the Texas Association of Magicians Stage Contest and the Florida State Magicians Convention. He is the recipient of the 2008 St. Tammany Student of the Year award. He attends Southern Methodist University in Dallas and is majoring in both business and theater.



Trigg Burrage

Scott Beelman is a teacher and audio engineer by day and folk-punk-rocker by night. Beelman, stage name Scott Potts, is a member of The Zydepunks, a genre-defying band that plays all types of amped-up folk music. Their fourth CD, Finisterre, is now available in stores.

Deneane Elise Clark is a novelist who writes historical romance fiction. Her latest book, *Charity*, will be released later this year.



Scott Beelman

Michael Reed attended Savannah College of Art and Design. He is a multitasking professional artist and sculptor who resides in Slidell with his family.

Olivia Ruby attends Fontainebleau High School and is in the gifted and talented theater program. She holds the title of Mandeville Idol 2009 and Miss Teen Baton Rouge 2010. Ruby is the official spokesperson for Prevent Child Abuse Louisiana.

Carmel Fargason is an artist who is majoring in biology at LSU. She has created an interesting way to weave the arts into her career, using her artistic talents for a good cause by auctioning her artwork to raise money for the St. Tammany Memorial Cancer Fund.

Rachel Segreti is a freshman at Salmen High School. She is an accomplished dancer and member of the New Orleans Youth Ballet and appeared in the movie *The Curious Case of Benjamin Button*. Segretti was accepted to the American Ballet Theater's Summer Program and spent the summer in Illinois with Ballet Chicago.

Victoria Allen currently attends Northshore High School and is in St. Tammany Parish's Talented Art Program. She has displayed her works in many local competitions, including the city's *Salad Days* student art exhibitions. Allen plans to pursue a career in either animation or illustration.

Donnie Bergeron attends Southeastern Louisiana University. He is a self-taught musician who writes, produces and records his own music. His music can be found on Amazon, iTunes and Napster.



Rachel Segreti



Donnie Bergeron

Cathy Wood Newman is an artist who teaches pottery and painting classes in the Slidell area.

Gretchen Demke is a graphic artist/creative services manager for a promotional firm in Irving, Texas and is the recipient of the 2010 Communicator Award of Excellence.

Ryan Conn attends the Rhode Island School of Design. He is a sculptor who dabbles in culinary arts and likes to use different foods, bronze and wood to create his works.

Caitlin McNany is an artist, photographer and musical performer who currently attends the University of Louisiana, Lafayette.

Kaitlyn Elise Landry is a computer animation major at Ringling College of Art and Design. She is the recipient of the 2010 NOCCA Institute Collection Award and placed first in the 2010 Congressional Art Competition.

Following the opening reception on August 27, *Where Are They Now?* will remain on display through Sept. 25. Gallery hours are Tuesday through Friday, 12 noon to 4 p.m. and Saturday, 9 a.m. to 12 noon. The Slidell Cultural Center is located at 2055 Second Street, on the first floor of City Hall.



John Doherty, *Twisted Steel Fleur de Lis*

In conjunction with *Where Are They Now?* Marty Sixkiller will present *Behind the Scenes of How to Train Your Dragon*, a sneak peek into the creation of computer animation. Sixkiller will speak at several local schools, and a public presentation will be held on Thursday, Sept. 16, 7 p.m. at the Salmen High School Cafeteria. Admission is free.

This event is held in conjunction with the Louisiana Cultural District and Main Street programs. All cultural events are made possible by the generosity of the city's 2010-2011 Cultural Season sponsors and are supported in part by funds from the Louisiana State Arts Council and the Louisiana Division of the Arts as administered by the St. Tammany Commission on Cultural Affairs.



Amy Guidry, *Everything's Coming Up Roses*

For more information, please visit the city's website at [www.slidell.la.us](http://www.slidell.la.us) or call the Department of Cultural & Public Affairs at (985) 646-4375. For the latest city news updates and information about upcoming events, follow the City of Slidell on [Twitter](#) and become a fan on [Facebook](#).