



City of Slidell

Dept. of Cultural & Public Affairs • Press Release for Immediate Release

Kim Bergeron • kbergeron@cityofslidell.org • www.slidell.la.us
P.O. Box 828, Slidell, LA 70459 • 985.646.4375 • Fax 985.646.4231

PRESS RELEASE

Date: May 12, 2010
For Release: Immediate
Contact: Kim Bergeron, 985-646-4375

“The Blue Dog Days of Summer” exhibit sparking excitement in Slidell *Citizens and businesses encouraged to help Paint the Towne Blue*

Once in a blue moon. A cure for the summertime blues. Singing the blues. Whatever blue phrase comes to mind, one thing is certain: the city of Slidell is getting ready to roll out the blue carpet in anticipation of *The Blue Dog Days of Summer: George Rodrigue from the New Orleans Museum of Art*. The Slidell Cultural Center, which is located on the first floor of City Hall, is hosting the original paintings featuring the iconic canine, June 25 through August 7. An opening reception will be held Friday, June 25, from 7 to 9 p.m. Gallery hours are Monday through Friday, noon to 4:00 p.m., Saturday, 9 a.m. to noon. Admission is free.

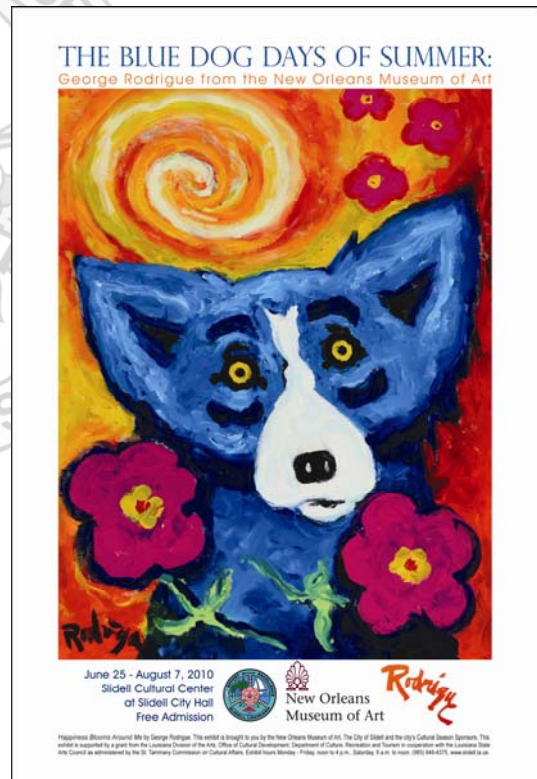
In celebration of the partnership between NOMA and Slidell, local galleries are also sponsoring related blue-themed exhibits and workshops. A progressive opening night event is also being planned to coincide with the city’s exhibit opening. Participating galleries include Slidell Art League Gallery, DuBuisson Gallery and Gallery 2100, each of which will alternate its opening night reception times to ensure that art lovers have enough time to visit all of the exhibits.

The city is encouraging local businesses and citizens to become part of the celebration.

“This is a great opportunity for our local businesses to showcase what they offer,” said Slidell Mayor Ben O. Morris. “In addition to providing our citizens an opportunity to enjoy the work of this world-renowned artist, right here in Slidell, we anticipate that the exhibit will attract visitors from other areas as well. We want to ensure that they have plenty of things to explore when they arrive.”

Businesses wishing to participate can submit Paint the Towne Blue specials to the Department of Cultural & Public Affairs no later than Friday, May 28. A complete listing will be provided on the city’s website on June 1.

“We want everyone to have a lot of fun with this,” said Kim Bergeron, Director of Cultural & Public Affairs. “Local restaurants can offer their own Paint the Towne Blue specials, whether it’s a bleu cheese burger,



PRESS RELEASE – ADD ONE

blueberry cobbler or a commemorative blue drink, and local shops can entice visitors with special discounts on blue items or blue dot sales, complimentary blue gift wrapping, and such. We'd also love to see residents tying blue ribbons on their mailbox posts or trees or lighting their porches with blue bulbs. Let's show our creativity!"

"The Blue Dog Days of Summer: George Rodrigue from the New Orleans Museum of Art marks the beginning of a long-term program of sharing its collection with Slidell in a series of annual exhibitions," said NOMA Director, E. John Bullard. "We are delighted that we could move forward with this partnership."

This Louisiana Cultural District and Main Street event is brought to you by the New Orleans Museum of Art, the City of Slidell's Department of Cultural & Public Affairs, its Commission on the Arts and the city's cultural season sponsors, including *Living Magazine*; *Louisiana Life Magazine*; Northshore Broadcasting Lake 94.7; Ochsner Medical Center – North Shore; Slidell Memorial Hospital; Whitney National Bank; AT&T; CLECO; *Northshore Conifer*; Ronnie Kole Foundation; Comfort Inn & Suites; Creative Picture Framing Inc. & Art Gallery; East St. Tammany Chamber of Commerce; Hampton Inn; *Inside Northside Magazine*; Lowry-Dunham, Case & Vivien; Northshore Harbor Center; The Purple Armadillo; Silver Slipper Casino; *The Slidell Independent*; Bargains Plus!/Postal Plus; Baskin Robbins; Councilman Bill & Laura Borchert; David Carollo, Attorney at Law; DuBuisson Gallery; HMS Architects, APC; Kathryn & Company's A Touch of Italy Café; Krewe of Bilge; Ed & Chris Massett; Paint Your Own Studio; Textron Marine and Land Systems; Slidell Symphony Society; Times Grill; Travel Leaders of Slidell; Dr. Russell & Nancy Westfall; WGSO 990 AM.

The exhibit is supported by a grant from the Louisiana Division of the Arts, Office of Cultural Development, Department of Culture, Recreation and Tourism in cooperation with the Louisiana State Arts Council as administered by the St. Tammany Commission on Cultural Affairs.

For more information, visit the city's Special Events calendar at www.slidell.la.us/events_special.php or contact the City of Slidell Department of Cultural & Public Affairs, (985) 646-4375.

