



# City of Slidell

Dept. of Cultural & Public Affairs • Press Release for Immediate Release

Alex Carollo • acarollo@cityofslidell.org • www.slidell.la.us  
P.O. Box 828, Slidell, LA 70459 • 985.646.4375 • Fax 985.646.4231

October 5, 2009

## Reinterpreting the Masters exhibit opens soon

The City of Slidell is proud to announce the opening of *Reinterpreting the Masters*, the Slidell Cultural Center's new exhibit that features the works Leonardo da Vinci, Vincent Van Gogh, Claude Monet, Pablo Picasso – to only name a few – as reinterpreted by area artists. The exhibit opens on Friday, October 9, from 7 to 9 p.m.

The Department of Cultural & Public Affairs challenged artists to reinterpret well known works of art into different styles or media. Twenty-three artists embraced the opportunity, submitting a total of 39 entries for the exhibit. Da Vinci's *Mona Lisa*, Vermeer's *Girl with a Pearl Earring* and Homer's *Breezing Up* were among some of the more popular entries.



Milo Stephens' *Mona Lisa Reinterpreted*

"What's intriguing about this show is that even though we have a number of entries reinterpreting the same original work of art, it's interesting to see how each artist brought their own unique style to their creations," said Kim Bergeron, director of the city's Department of Cultural & Public Affairs.

The City of Slidell's Commission on the Arts served as the jurors for this exhibit. The commission is a community advisory board to the city's Department of Cultural & Public Affairs. Established in 1979, the commission provides guidance and advice to the mayor, city council and other city agencies regarding grants, cultural projects and policies. Commissioners are appointed by the mayor with the primary function to develop, nurture and sustain the cultural life of the community.



Rita Maduell's *New Orleans Cotton Exchange*

The Commission selected recipients for best of show, second and third place, plus honorable mention awards. The artists will be honored on Friday, Oct. 9, during the opening reception from 7 to 9 p.m. Winning artists will receive ribbons and cash prizes.

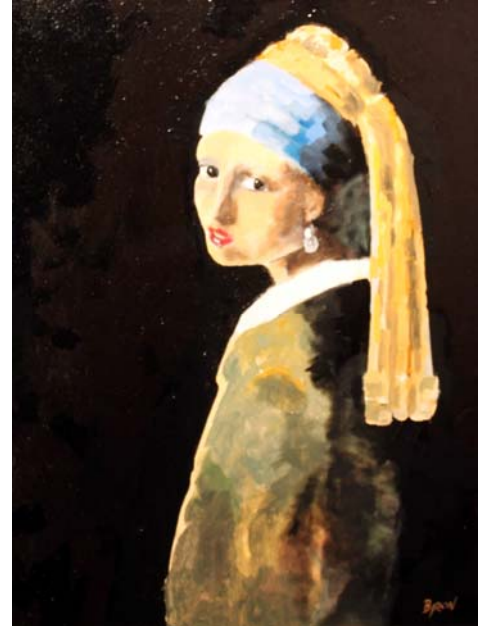
Gallery hours are Monday through Friday from 10 a.m. to 12:30 and 1:30 to 4 p.m. and Saturdays from 10 a.m. to 2 p.m. The exhibit will be on display during the city's *Arts Evening* festival and will remain on display through December 13. The Slidell Cultural Center is located at 2055 Second Street, on the first floor of City Hall.

PRESS RELEASE – ADD ONE

Participating artists include Dawn C. Allen, Priscilla Betz, Justin Finnegan, Lori Gomez, William Byron Gray, Ina Griffin, Tanager Haemmerle, Richard Harrison, Kyle Hoppens, Kim Hufft, Peggy McHugh Killeen, Sandra Lindsay, Andree Maduell, Lola Maduell, Rita Maduell, Candace Page, Mary Stephens Powe, Michael Reed, Raymond Reidling, Milo Stephens, Henry Stiller, Emily Suarez and Marty Swan.

*Reinterpreting the Masters* is presented by the City of Slidell's Department of Cultural & Public Affairs, its Commission on the Arts and the 2009 – 2010 Cultural Season Sponsors, including Living Magazine; Louisiana Life Magazine; Slidell Memorial Hospital; Whitney Bank; AT&T; CLECO; The Northshore Conifer; Ronnie Kole Foundation; Comfort Inn & Suites; Creative Picture Framing Inc. & Art Gallery ; East St. Tammany Chamber of Commerce; Inside Northside Magazine; Lowry-Dunham, Case & Vivien; The Purple Armadillo; Silver Slipper Casino; Slidell Independent News; Bargains Plus/Mr. Map; Baskin Robbins; Councilman Bill & Laura Borchert; David Carollo, Attorney at Law; DuBuisson's Art Corner; HMS Architects, APC; Kathryn & Company's A Touch of Italy Café; Krewe of Bilge; Ed & Chris Massett; Northshore Regional Medical Center; Slidell Symphony Society; Times Grill; Travel Leaders of Slidell; Dr. Russell & Nancy Westfall. This event is supported in part by funds from the Louisiana Division of the Arts as administered by the St. Tammany Commission on Cultural Affairs.

For more information about *Reinterpreting the Masters*, please call the Department of Cultural & Public Affairs at (985) 646-4375 or visit [www.slidell.la.us](http://www.slidell.la.us).



William Byron Gray's *Girl with a Pearl Earring*

